

Mbsm.pro, Compressor, THK2390YJE, LBP, 1/3 hp, R134a, Freezing, Tecumseh Compressor

 mbsm.pro/62933.html

rober us

April 20, 2025



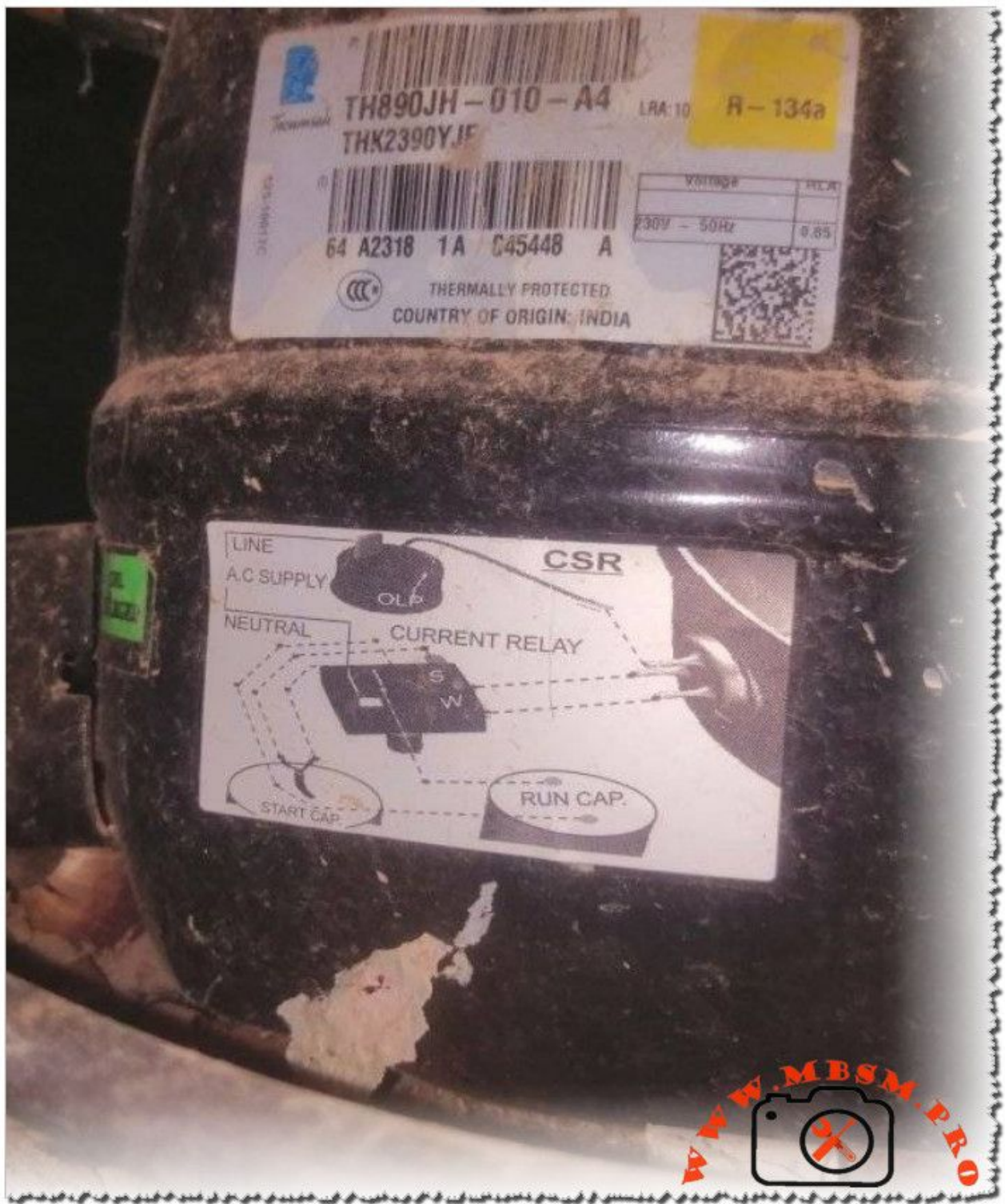
The THK2390Y (often referenced as THK2390YJE) is a hermetic reciprocating compressor manufactured by Tecumseh, commonly used in refrigeration and air conditioning applications. Key specifications and features include:

- Compressor Type: Reciprocating hermetic compressor
- Refrigerant: R134a
- Displacement: Approximately 8.1 cc
- Motor Type: Capacitor Start Induction Run (C.S.I.R.), 2-pole, 2850 rpm
- Voltage: Typically 220-240 V, 50 Hz, single phase
- Cooling: Compressor cooling fan included
- Performance: Suitable for low back pressure (LBP) evaporating temperature range from about -40°C to -12.2°C (-40°F to 10°F)
- Motor Protector: External type, model KME660-21/C
- Oil Type: Polyolester oil, oil charge around 300 cc
- Weight: Approximately 9 kg with oil and accessories
- Application: Designed for refrigeration systems requiring high start torque and reliable operation in low temperature ranges¹³⁴⁶.

This compressor is widely used in commercial refrigeration, air conditioning, and heat pump systems due to its robust design and efficiency in low-temperature environments. The THK2390Y (often referenced as THK2390YJE) is a hermetic reciprocating compressor manufactured by Tecumseh, commonly used in refrigeration and air conditioning applications. Key specifications and features include:

- Compressor Type: Reciprocating hermetic compressor
- Refrigerant: R134a
- Displacement: Approximately 8.1 cc
- Motor Type: Capacitor Start Induction Run (C.S.I.R.), 2-pole, 2850 rpm
- Voltage: Typically 220-240 V, 50 Hz, single phase
- Cooling: Compressor cooling fan included
- Performance: Suitable for low back pressure (LBP) evaporating temperature range from about -40°C to -12.2°C (-40°F to 10°F)
- Motor Protector: External type, model KME660-21/C
- Oil Type: Polyolester oil, oil charge around 300 cc
- Weight: Approximately 9 kg with oil and accessories
- Application: Designed for refrigeration systems requiring high start torque and reliable operation in low temperature ranges¹³⁴⁶.

This compressor is widely used in commercial refrigeration, air conditioning, and heat pump systems due to its robust design and efficiency in low-temperature environments.



Private Picture Copyright : WWW.MBSM.PRO

THK 2390 (VJE)		
REFRIGERATION TECUMSEH COMPRESSOR		
Application	LBP	
Refrigerant	R134A	
Evaporating Temperature	7.2°C	
Condensing Temperature	55°C	
Liquid Sub Cooling Temperature	32.2°C	
50 Hz, 1ph, R-22		
Dis. / Rev. Capacity	cc HP	8.2 1/3
Rated Voltage	V	230
Current	A	0.85
Power	Watts	225.5
LRA	(A)	10
EER	Btu/W/hr	4.81
Circuit		PTC
Run Cap	Mfd, VAC	6
Start Capacitor	Mfd, VAC	88-108
Oil CC		230
Weight	Kgs (Lbs)	8.9 (19.62)



TH compressor



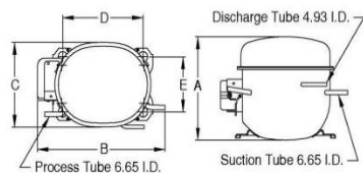
Private Picture Copyright : WWW.MBSM.PRO



KULTHORN KIRBY PUBLIC CO.,LTD. TECHNICAL SPECIFICATION

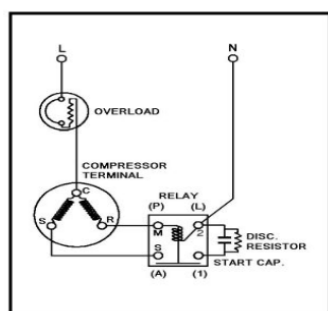
HERMETIC COMPRESSOR AE 2390Y BOM ID : S45-A0 High Torque Start

PRINCIPAL DIMENSIONS - mm



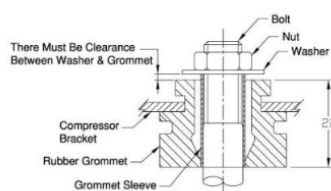
A: 176 B: 262 C: 155 D: 165 E: 102

SCHEMATIC WIRING DIAGRAM C.S.I.R.



SCHEMATIC WIRING DIAGRAM -

MOUNTING KIT



Electrical : 220-240 V/50 Hz. 1 Phase

Nominal Performance

Capacity	237 / - Watts
	809 / - BTU/Hr
	204 / - Kcal/Hr
Power Input	197 / - Watts
Locked Rotor Amps	8.00 / - Amps
Max Continuous Current	- / - Amps
Rated Load Amps	1.30 / - Amps
COP	1.20 / - Watts / Watts
EER	4.10 / - BTU/W-Hr

Testing Conditions

Condensing Temperature	54.40 °C	129.9 °F
Evaporating Temperature	-23.30 / - °C	-9.9 / - °F
Liquid Temperature	32.20 °C	90.0 °F
Return Gas Temperature	32.20 °C	90.0 °F
Ambient Temperature	32.20 °C	90.0 °F

Application

Evaporating Temp. Range	LBP	@ -40.00 °C to -12.20 °C (-40.0° F to 10.0° F)
	Heat Pump	- °C to - °C (-° F to -° F)

Refrigerant	R134a
Refrigerant Flow Control	Capillary Tube
Compressor Cooling	Fan

Compressor and Motor data

Compressor Type	Reciprocating
Displacement	8.10 cc.
Oil Type	Polyolester Oil
Oil Charge	300 cc.
Motor Type	C.S.I.R. ; 2 Pole 2,850 / - r/m
Voltage Range	187-264/- Volts 50/- Hz.

Winding Resistance at 25 °C

Start	44.91 Ohms
Run	12.00 Ohms
Weight with Oil	9.00 Kg.
Weight with Oil and Accessories	9.45 Kg.

Electrical Components

Motor Protector

Type	External 3/4"
Model Number	KME660-21/C
Open / Close	100-110 / 78-60 °C
1st Cycle trip at 25 °C	8.00 Amps(main) - Amps(start)

Motor Starter

Type	Current Relay
Model Number	KME684-12
Pick Up (max.)	4.60 Amps
Drop Out (min.)	4.00 Amps
Terminal Cover	KMD 901-12
Start Capacitor	36-43 µF 330 VAC.
Disch Resistor for Start Cap	15000 Ohms 2 W
Run Capacitor	No µF No VAC.

Mounting Kit

Rubber Grommet	4007KMD905-3
Sleeve Grommet	3KMD903-2-Z
Washer	4023KEB387

Since we are constantly improving our product, the specification are subject to change without notice.

REV. DATE
20-04-16

C / N No.
0128/16

Certificate Marks



COMPRESSOR PERFORMANCE TABLE

Model	Type	Power Capacity (HP)	Power (W)	Current (A)
Compressor TECUMSEH THK 1330 Y	1/10 HP	1/10 HP	74.6 W	0.4 A
Compressor TECUMSEH THK 1340 YCF	1/9 HP – 1/8 HP	1/9 HP – 1/8 HP	83 W – 93.25 W	0.45 A – 0.5 A
Compressor TECUMSEH THK 1351 YJF	1/8 HP – 1/6 HP	1/8 HP – 1/6 HP	93.25 W – 124.33 W	0.5 A – 0.65 A
Compressor TECUMSEH THK 1365 YCG	1/6 HP – 1/5 HP	1/6 HP – 1/5 HP	124.33 W – 149.2 W	0.65 A – 0.8 A
Compressor TECUMSEH THK 1374 YFS	1/5 HP – 1/4 HP	1/5 HP – 1/4 HP	149.2 W – 186.5 W	0.8 A – 1 A
Compressor TECUMSEH THK 2390 Y	1/4 HP – 1/3 HP	1/4 HP – 1/3 HP	186.5 W – 248.67 W	1 A – 1.35 A



Attachment	Type	Link
Mbsm_dot_pro_private_picture-THK2390YJE	image/jpeg	Get Link
Mbsm_dot_pro_private_picture-THK2390YJE-1	image/jpeg	Get Link
Mbsm_dot_pro_private_PDF-AE2390Y	application/pdf	Get Link

Attachment

Type

Link

Image

[View Image](#)



Image

[View Image](#)

THK 2390 (VJE)		
REFRIGERATION TECUMSEH COMPRESSOR		
Application	LBP	
Refrigerant	R134A	
Evaporating Temperature	7.2°C	
Condensing Temperature	55°C	
Liquid Sub Cooling Temperature	32.2°C	
50 Hz, 1ph, R-22		
Dis. / Rev. Capacity	cc HP	8.2 1/3
Rated Voltage	V	230
Current	A	0.85
Power	Watts	225.5
LRA	(A)	10
EER	Btu/Whr	4.81
Circuit	PTC	
Run Cap	Mfd, VAC	6
Start Capacitor	Mfd, VAC	88-108
Oil CC	230	
Weight	Kgs (Lbs)	8.9 (19.62)

TH compressor

Private Picture Copyright : WWW.MBSM.PRO

